

# EUROCUBO CUBE MOULD

**Cube mould EUROCUBO  
is made in accordance with  
all major global standards**

UNI EN 12390-1:2002  
(Testing on hardened concrete. Shape, size and other  
requirements for specimens and moulds)

The Eurocubo cube mould is the new formwork made of rigid plastic for the packaging of cubic samples in reinforced concrete.

Eurocubo is the only calibrated and patented cube mould.

Eurocubo minimises assembly time, allows operation in complete safety and permits packaging and the easy demoulding of cubic samples, avoiding any possible damage to specimens.

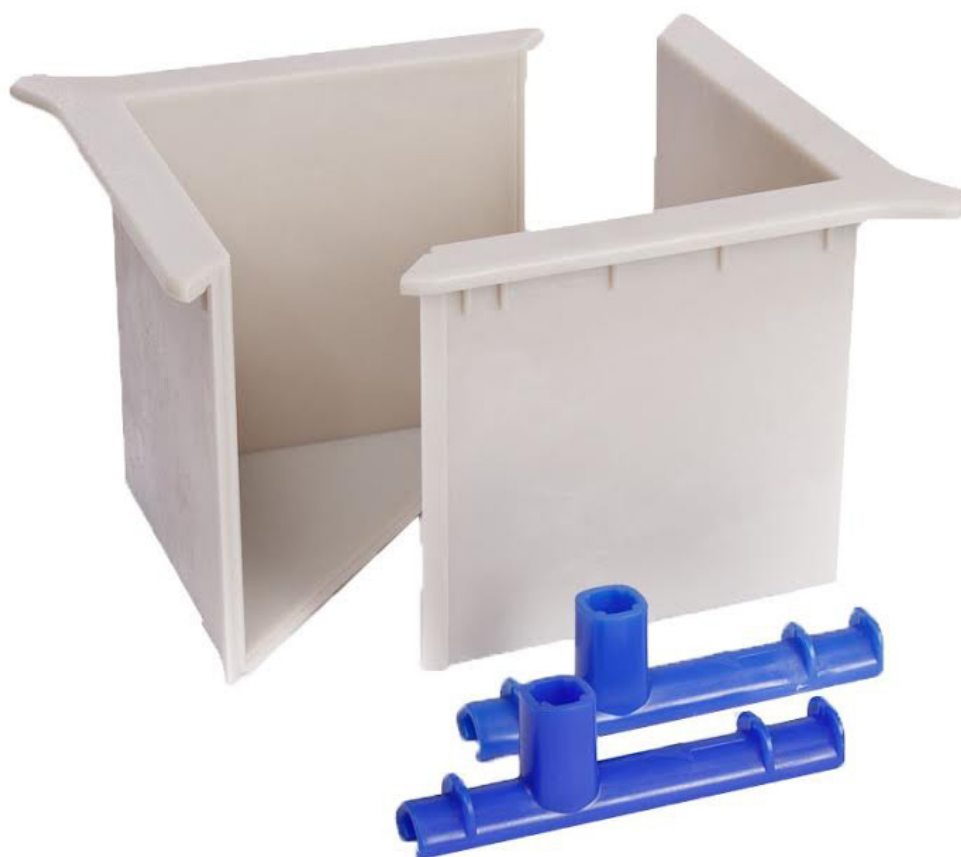
## ■ SPECIFICATIONS

The Eurocubo cube mould is composed of two specular rigid plastic components which are easily connectible by means of special tapping and lateral closing inserts. Innovation lies in having created a mould which is not a single block.

To assemble the formwork, the two identical modular half-shells obtained by moulding with sturdy, undeformable resin are brought into contact.

Each of these half-shells is formed by two vertical adjacent sides arranged at 90° which delimit a lower triangular bottom horizontal wall.

The desired cubic formwork is formed when the two half-shell surfaces are brought into contact.



## ■ STRENGTHS

- Avoids possible errors in assembly by operators
- Reduces time and product operating and maintenance costs
- Can be reused repeatedly under routine maintenance conditions
- Very practical equipment thanks to its light weight
- Fully recyclable material
- Perfect, fully compliant test surfaces
- Considerable space savings: the cube moulds can be stacked and a single 6-piece pack dimensions are 400x300x240 mm

## WHY CHOOSE EUROCUBO

For the packaging of cubic specimens , with a side of 150 mm , are employed :

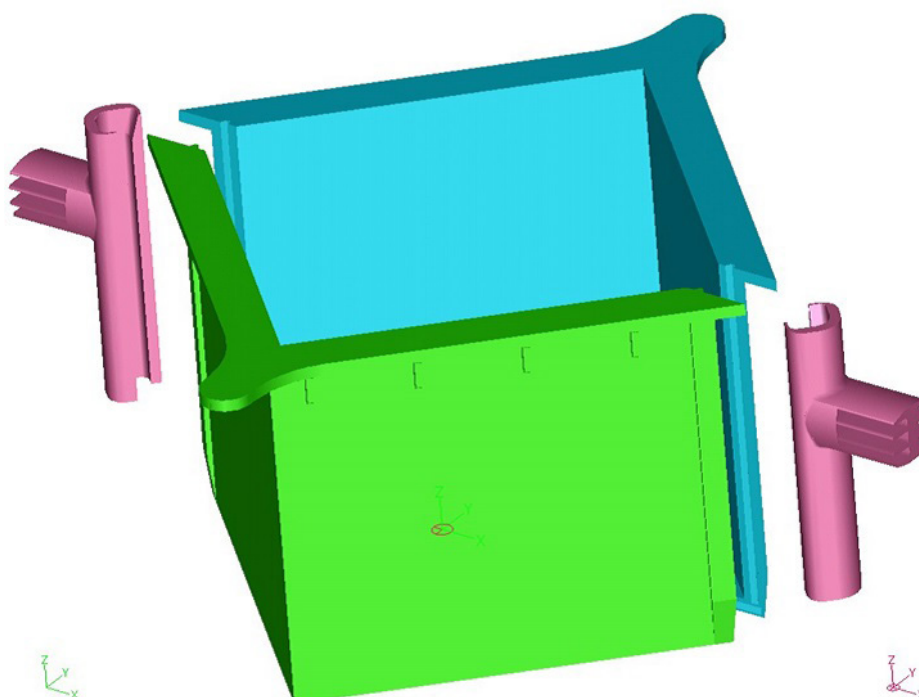
- Formwork steel
- Formwork polystyrene
- Formwork monobloc polyurethane

Type of form	Dimensional tolerances of test piece after de-forming	Flatness tolerances of test piece after de-forming	Weight of empty form (Kg)	De-forming of test piece	Transport of forms
Steel	conforming	conforming	<30 kg (double)	easy	cumbersome as enbloc
Polystyrene	not always conforming	not always conforming	0.18 kg (single)	very difficult	cumbersome as enbloc
Polyurethane	conforming	conforming	2.0 kg (single)	very difficult	cumbersome as enbloc

## TECHNICAL SPECIFICATIONS

### PHYSICAL

DIMENSIONS	150 x 150 x 150 mm	WEIGHT	1,060 kg
RECYCLABLE MATERIAL	impact-resistant polystyrene resin	REUSE	up to 20 times in conditions of routine maintenance
CALIBRATED			





**THE KIT INCLUDES:**

- No. 6 unit
- No. 2 rod
- No. 12 fixing components

**PACKAGE**

DIMENSIONS	400 x 300 x 240 mm
WEIGHT	6,1 Kg

**WARRANTY & MAINTENANCE**

**24**  
months

DRC guarantees maintenance service at its center or at authorized centers.



**DRC**  
Diagnostic Research Company  
Non Destructive Testing

Per informazioni sull'ordine potete contattare

DRC srl  
Via Montesicuro snc  
60131 Ancona - Italy  
Phone: +39 071 8036077  
e-mail: [info@drcitalia.net](mailto:info@drcitalia.net)

[www.drcitalia.it](http://www.drcitalia.it)