

DRC

Diagnostic Research Company
Non Destructive Testing



TAM 100

TESTING ANVIL

The calibration anvil TAM100 is made in accordance with all major global standards

UNI EN 12504-2
ASTM C805

Test blocks are essential tools for testing the calibration of mechanical and electronic sclerometers. Non-destructive testing with a sclerometer can only give reliable results if the instrument itself is regularly calibrated.

The TAM 100 calibration anvil is made from a cylinder in steel C45 with a diameter of about 150mm and 150mm in height. A semi-spherical shape which mirrors the rebound hammer strike piston surface has been created on one of the two flat surfaces.

The shaped surface where impact occurs is characterized by a surface hardness no less than 52 HRC, the weight of this cylinder is 16Kg \pm 0.5 in full compliance with reference standards.



FIELD OF APPLICATION

Checking the calibration of mechanical and electronic sclerometers.

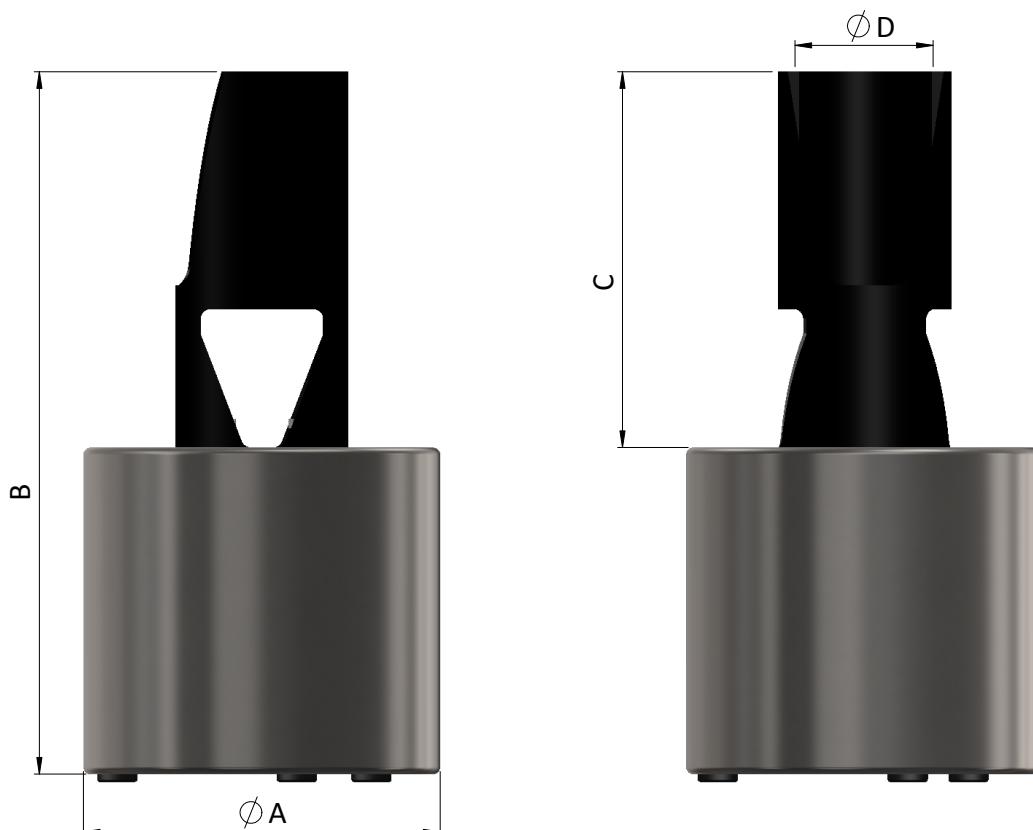
TECHNICAL SPECIFICATIONS

PHYSICAL

DIMENSIONS	(B)285 x (C)150 x (ϕ A)140 x (ϕ D)50 mm
WEIGHT	16 Kg
HARDNESS	>52HRC

MECHANICAL

ANVIL	Steel C45
HEAT TREATMENT	Nichelatura
UPPER PART	Moplen





THE KIT INCLUDES:

- Calibration anvil TAM 100
- Calibration report
- Rigid case

PACKAGE

DIMENSIONS	180 x 180 x 335 mm
WEIGHT	19,80 Kg

WARRANTY & MAINTENANCE

24

